

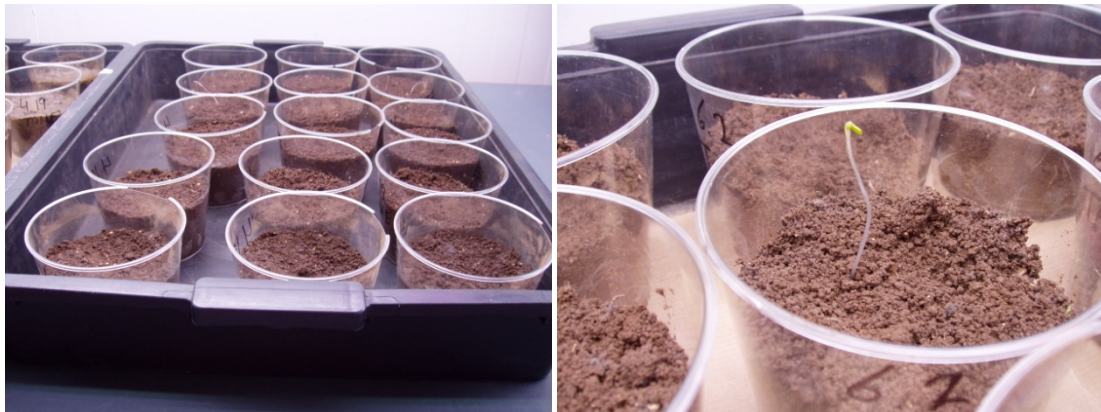
### Annex 3

**Table 1.** Treatments assayed in the first laboratory experiment

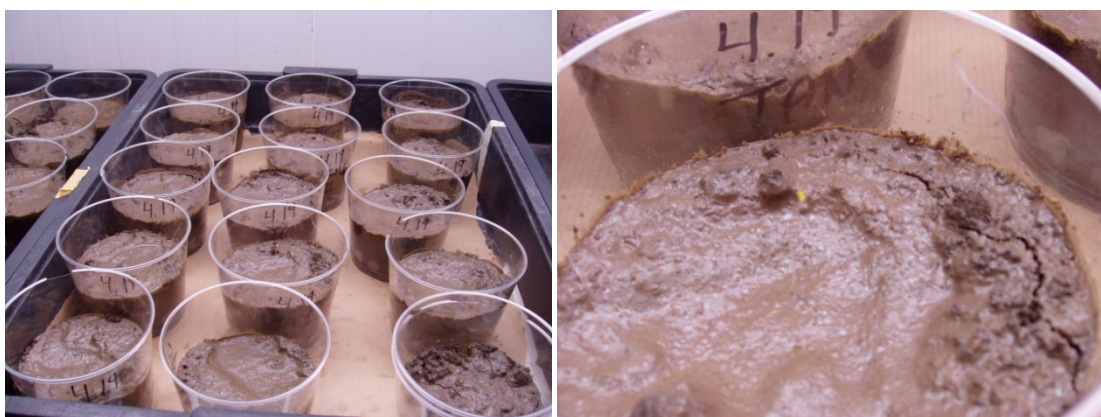
Nomenclature	Treatment description
<b>T</b>	Without treatment ( <i>natural attenuation</i> )
<b>TA</b>	Mechanical aeration
<b>TAN</b>	Mechanical aeration + nutrients in a molar concentration ratio: 100C:10N:1P in regard to TOC soil
<b>TAME</b>	Mechanical aeration + microorganisms and enzyme inoculation
<b>TAC</b>	Mechanical aeration + sewage sludge compost

**Table 2.** Treatments assayed in the second laboratory experiment

Nomenclature	Treatment description
<b>T</b>	Without treatment ( <i>natural attenuation</i> )
<b>TA</b>	Mechanical aeration
<b>TZ</b>	Zeolite addition (30%)
<b>TAZ</b>	Mechanical aeration + Zeolite addition (30%)



**Figures 1 and 2.** Microcosms prior to OOMW contamination and after 15 days of pre-incubation (16 February).



**Figures 3 and 4.** Microcosms just after contamination with the OOMW.



**Figures 5 and 6.** Microcosms 2 days after OMWW contamination. Fungi growth is observed in microcosms with OMWW addition.



**Figures 7 and 8.** Microcosms 2 weeks after OOMW contamination in the incubation for assaying the effect of a zeolite. Fungi growth is observed in microcosms with OOMW addition.